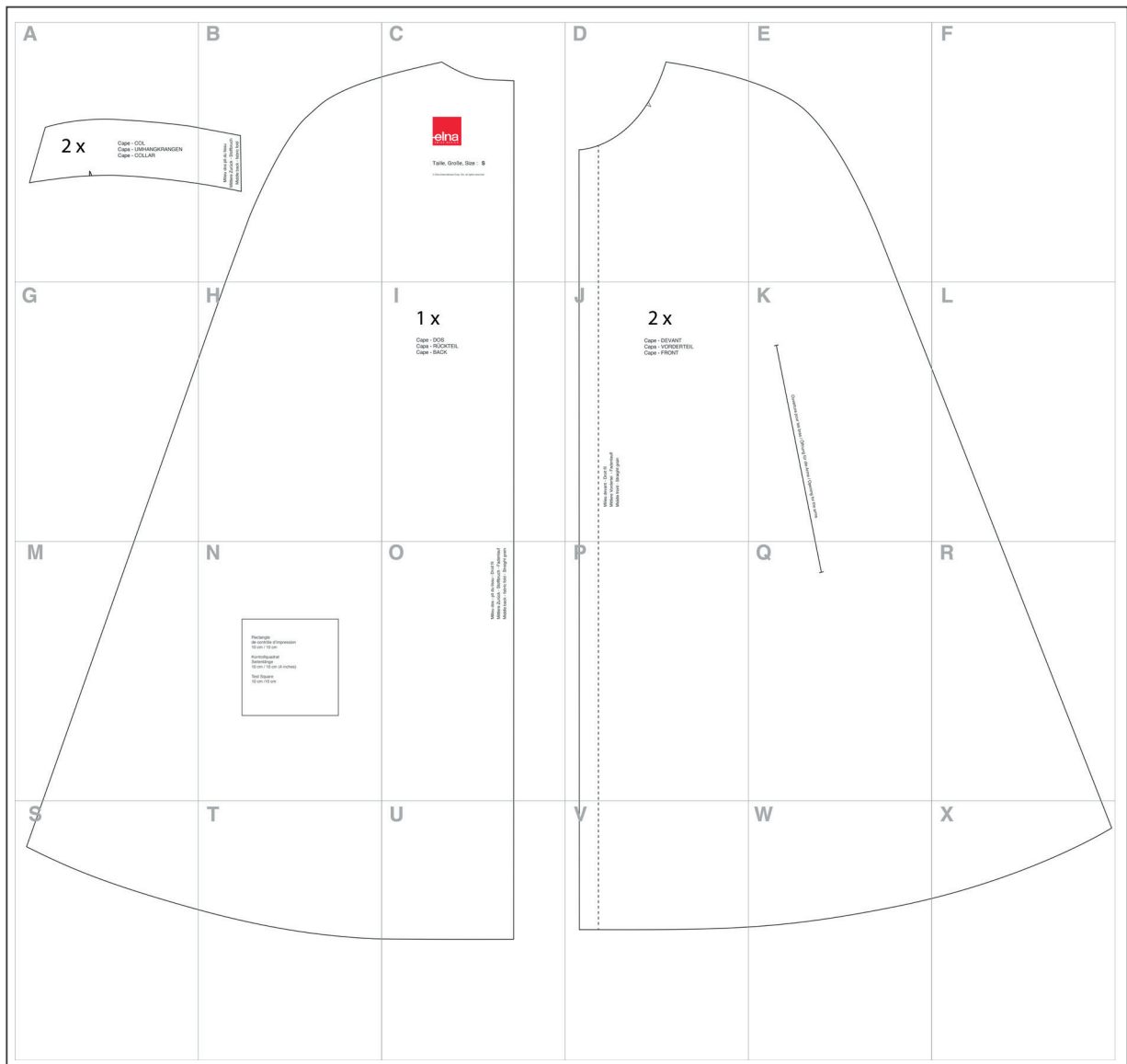
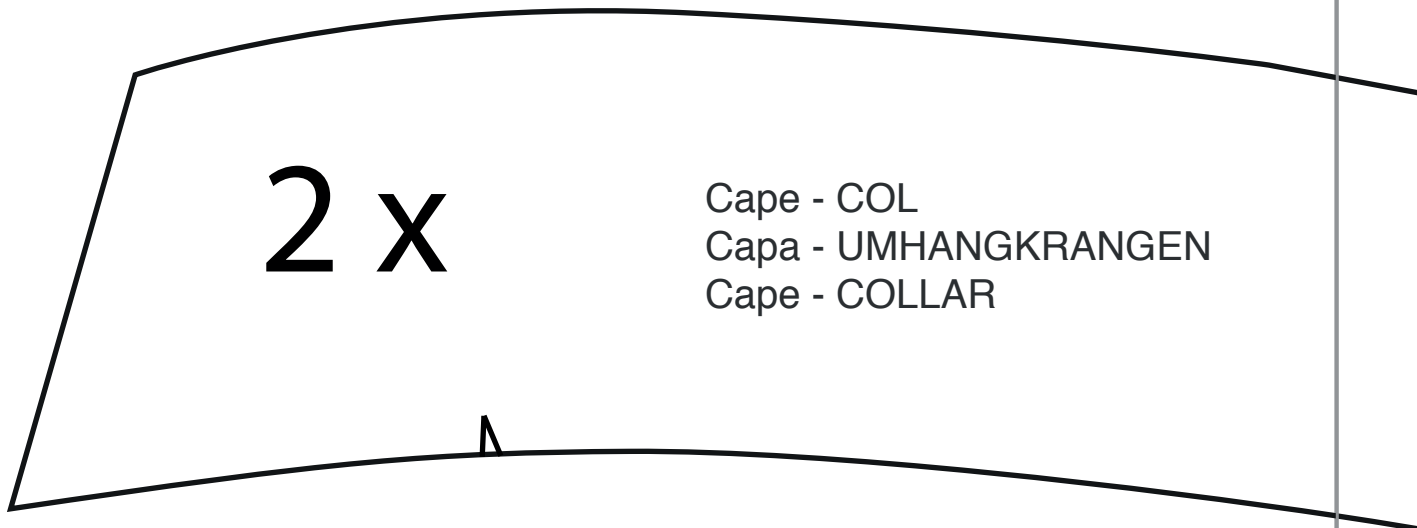


Cape
Capa
Cape



This pattern doesn't include seam allowance

A



2 x

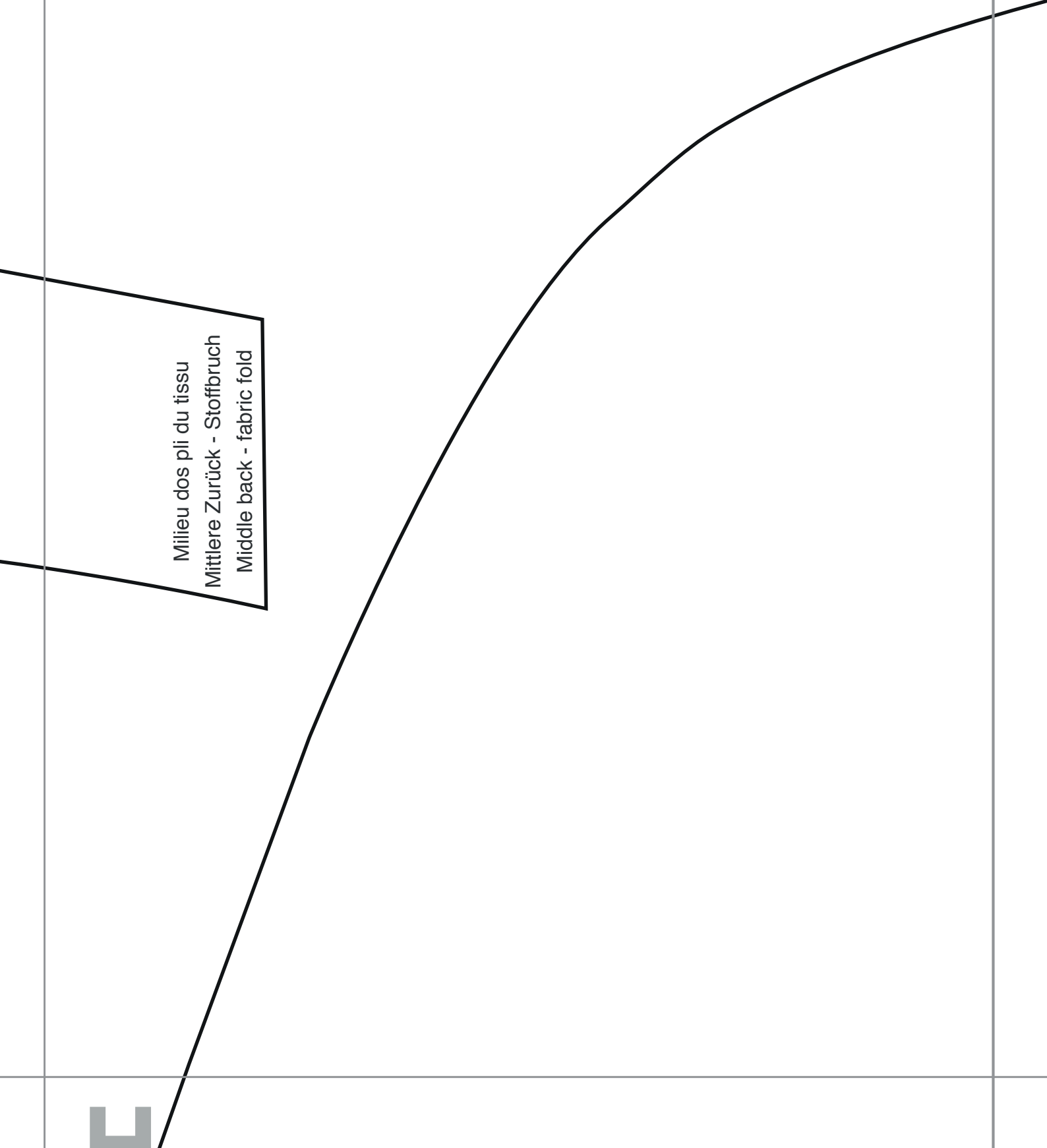
Cape - COL
Cape - UMHANGKRANGEN
Cape - COLLAR

G

B

Milieu dos pli du tissu
Mittlere Zurück - Stoffbruch
Middle back - fabric fold

E



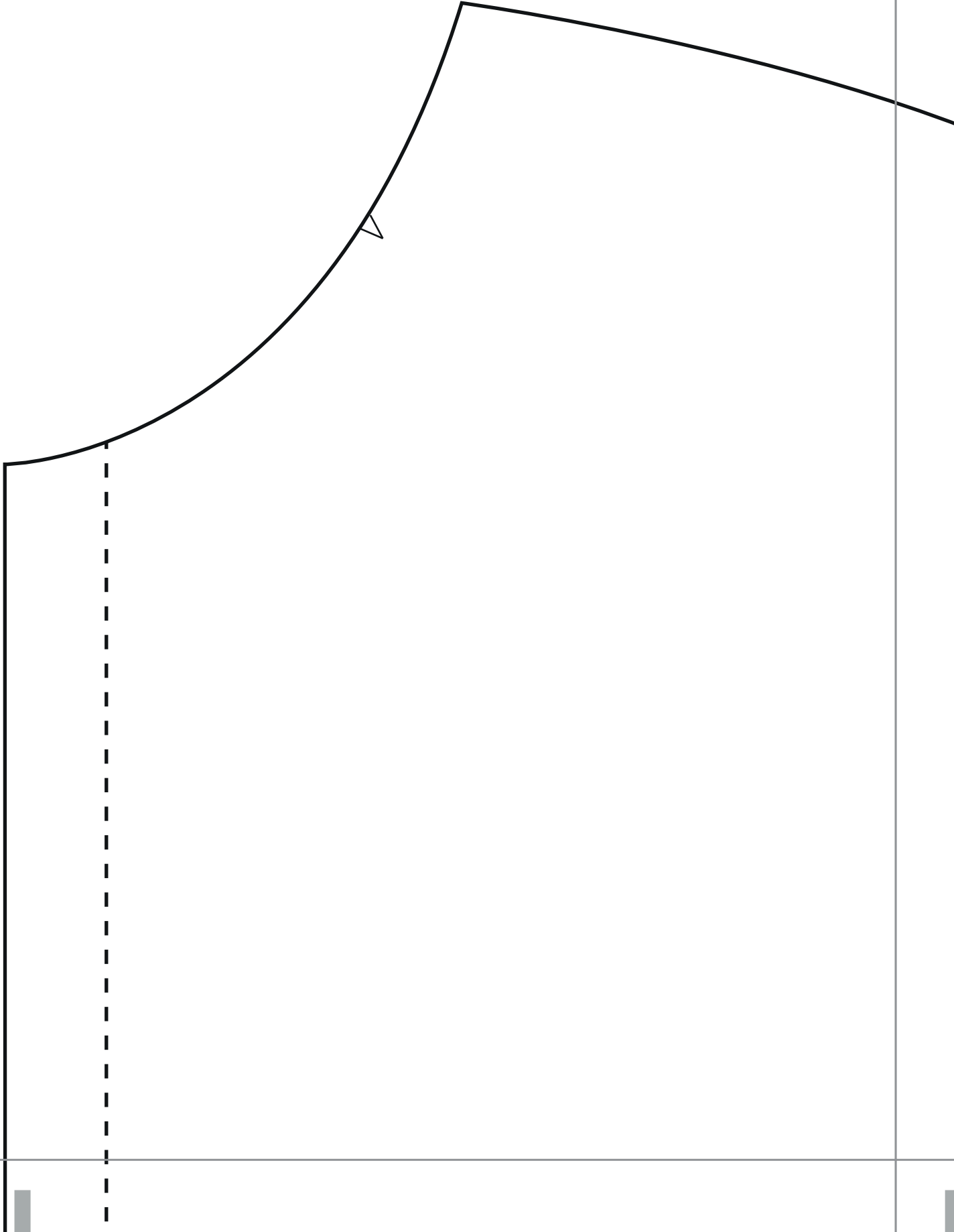
C



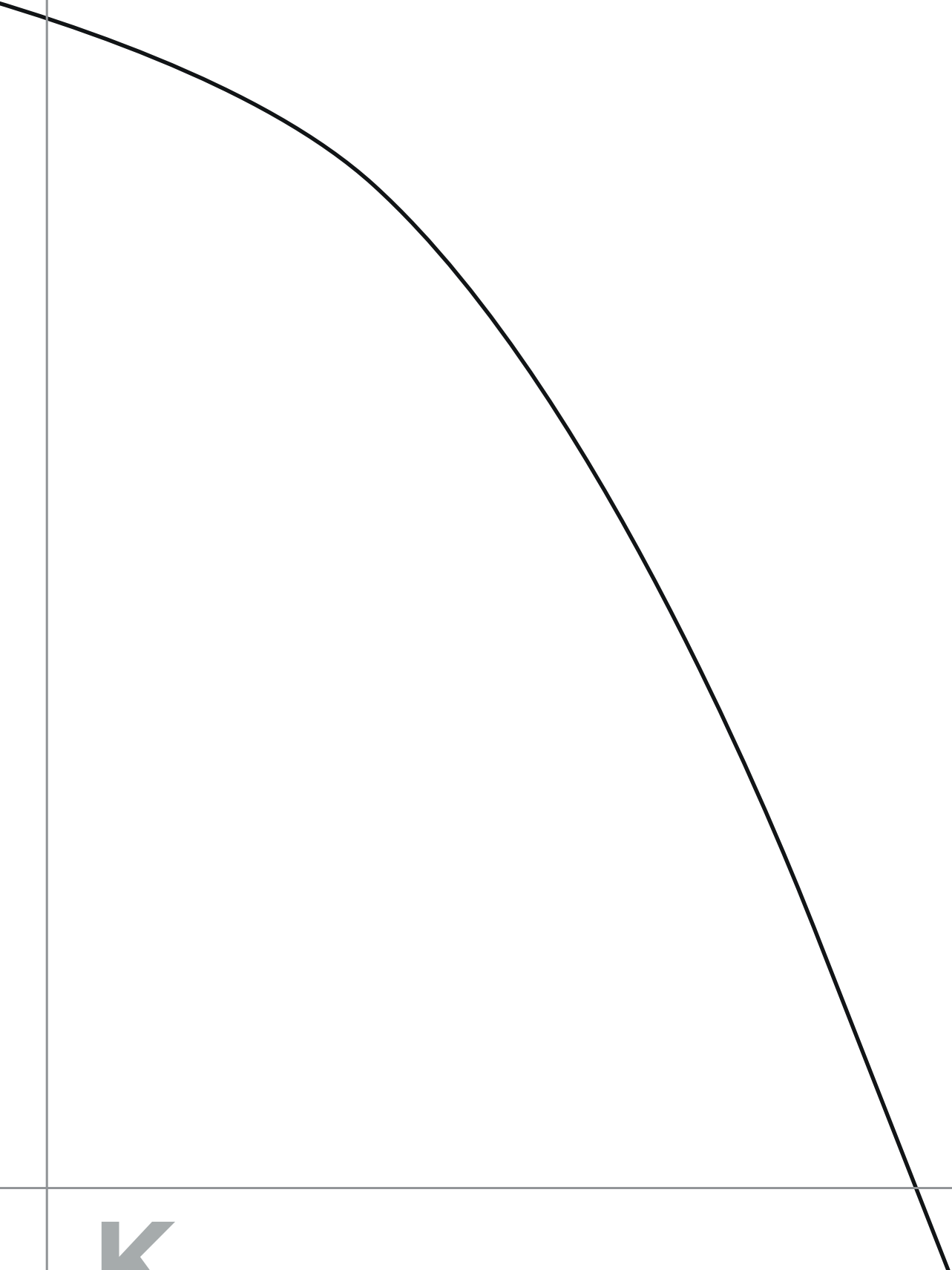
Taille, Größe, Size : **S**

© Elna International Corp. SA, all rights reserved

D



E



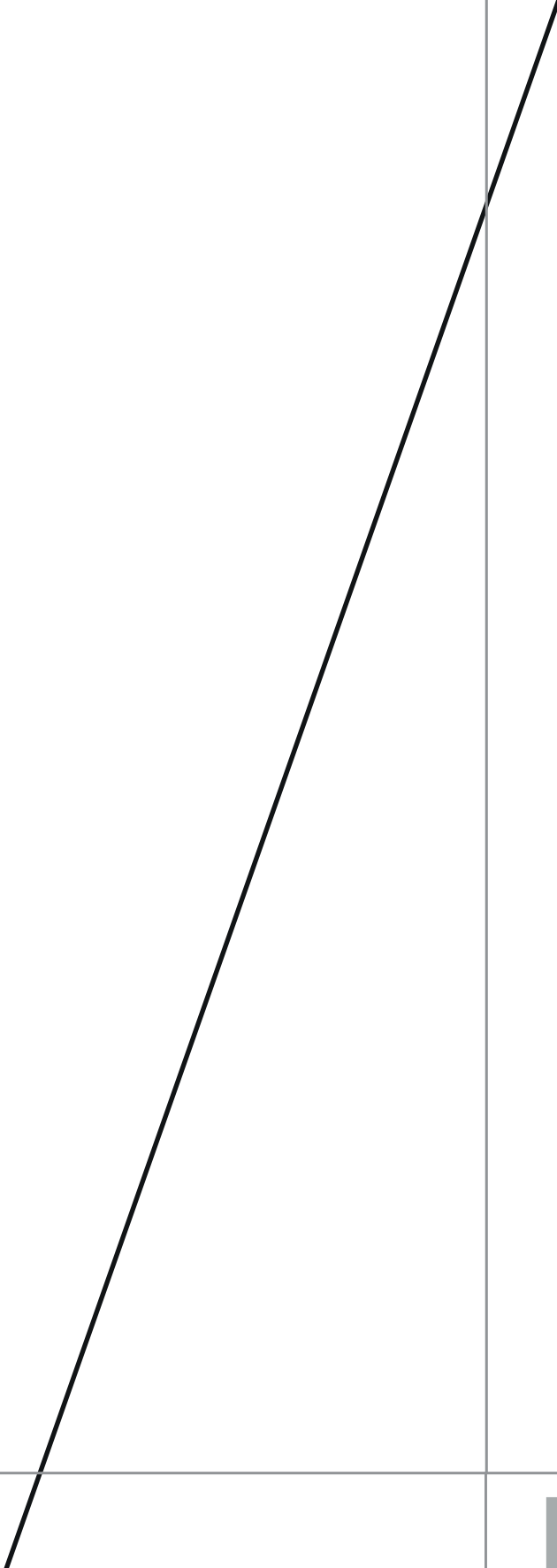
K

F

I

G

M



H

N

I

1 X

Cape - DOS
Capa - RÜCKTEIL
Cape - BACK

O

lauf
rain

J

2 x

Cape - DEVANT

Capa - VORDERTEIL

Cape - FRONT

Milieu devant - Droit fil
Mittlere Vordertheil - Fadenlauf
Middle front - Straight grain

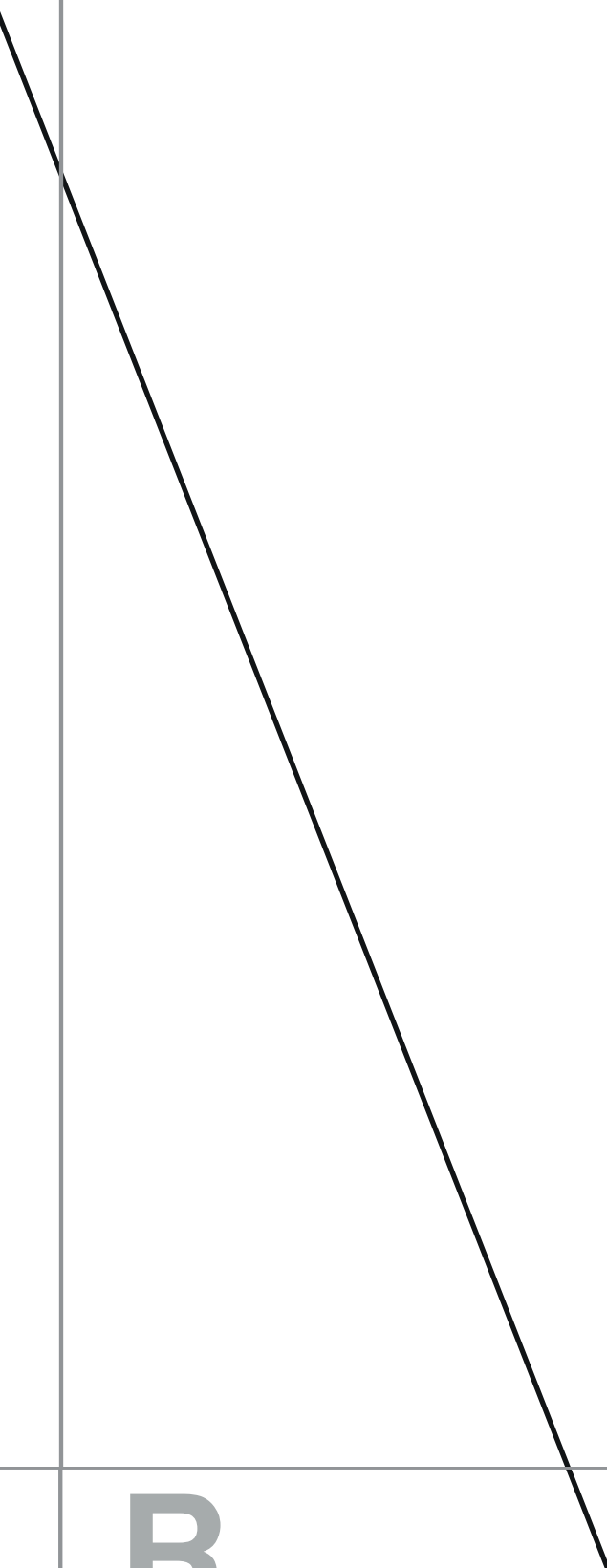
P

K

Overture pour les bras / Öffnung für die Arme / Opening for the arms

Q

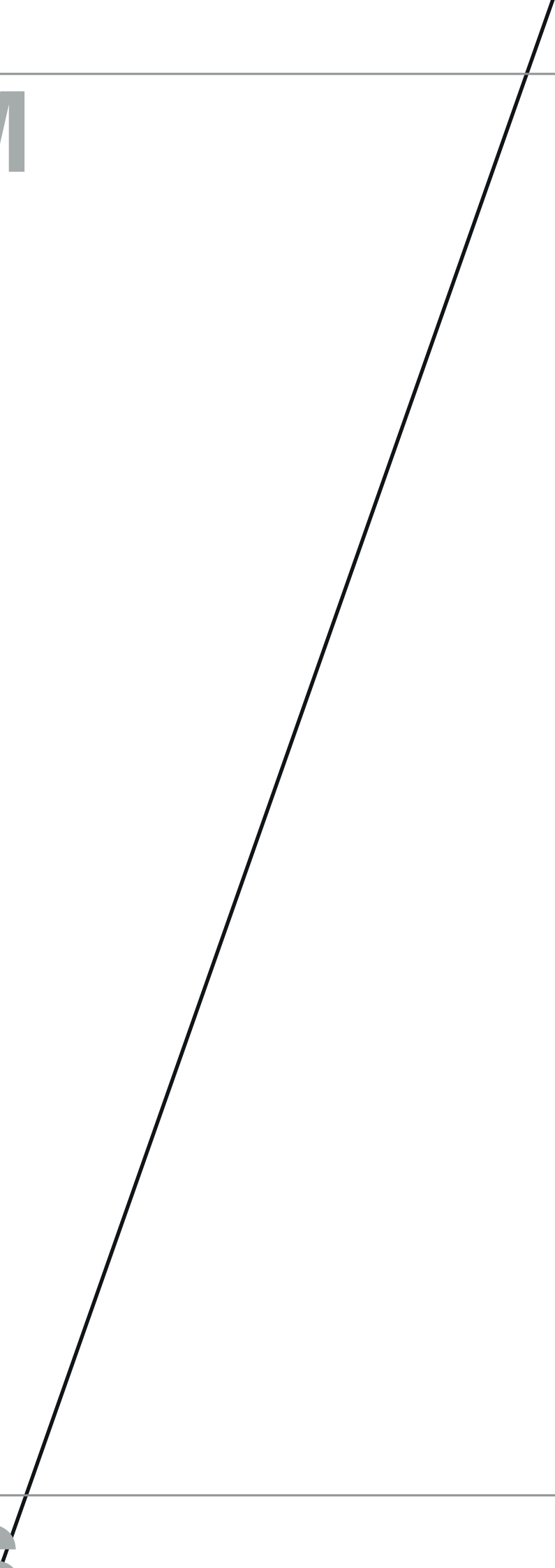
L



B

M

Q



N

Rectangle
de contrôle d'impression
10 cm / 10 cm

Kontrollquadrat
Seitenlänge
10 cm / 10 cm (4 inches)

Test Square
10 cm / 10 cm

T

O

Milieu dos - pli du tissu - Droit fil
Mittlere Zurück - Stoffbruch - Fadenlauf
Middle back - fabric fold - Straight grain

P

v

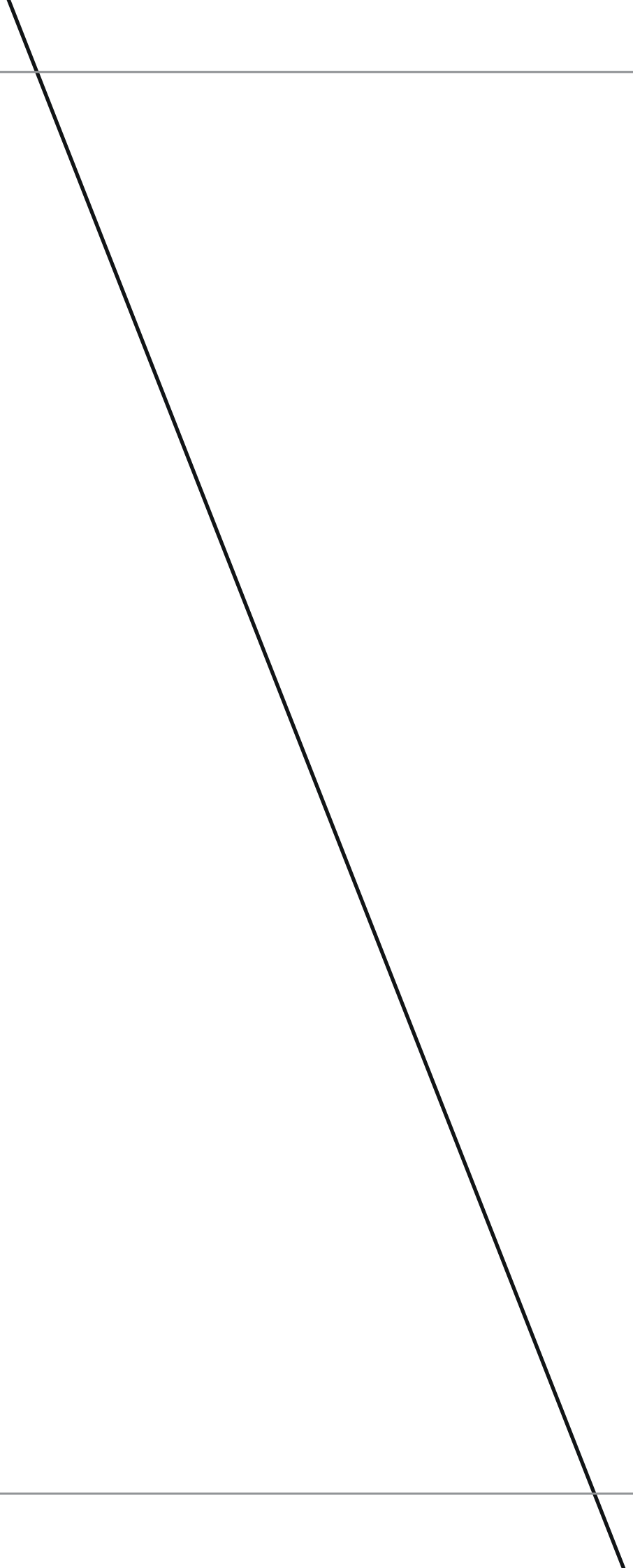
Q



W

R

Y



S

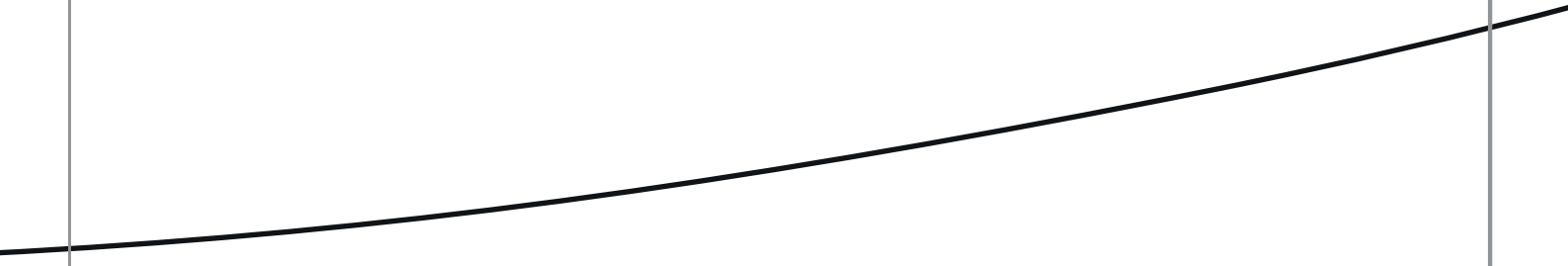
T

U

V



W



X

